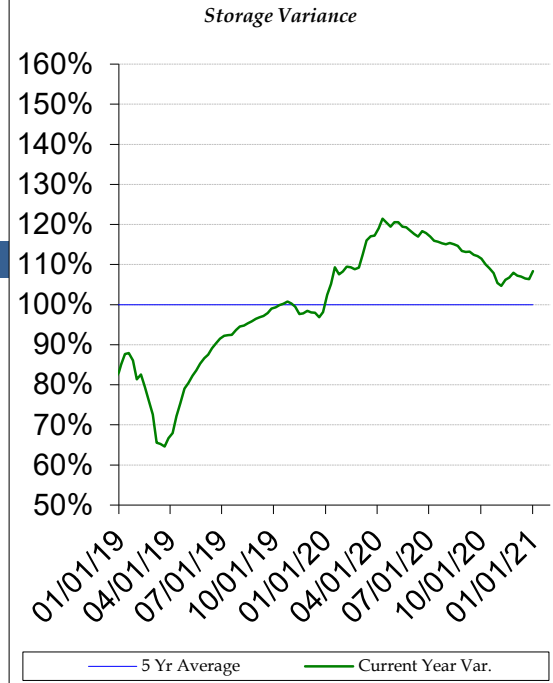


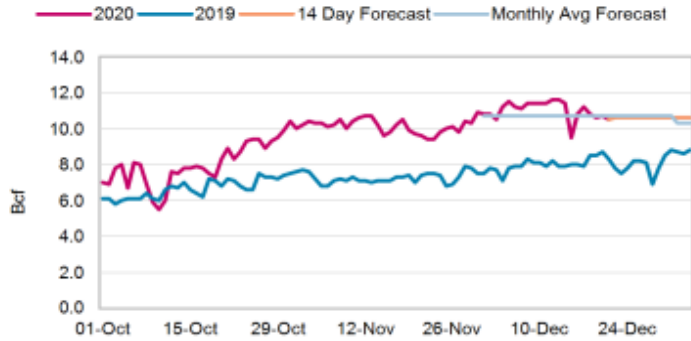
# Commodity Fundamentals Update

Region	1-Jan	25-Dec	Change	Last year	5-yr avg
East	765	810	-45	771	737
Midwest	923	973	-50	905	871
Mountain	196	204	-8	173	171
Pacific	282	289	-7	251	274
South Central	1163	1183	-20	1,093	1,075
Total U.S.	3,329	3,459	-130	3,193	3,128



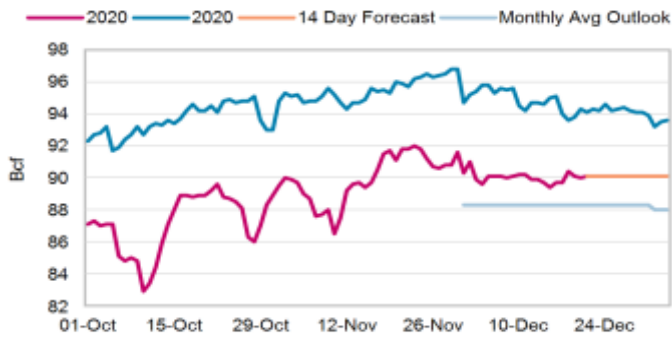
## Bentek LNG Data

### US LNG EXPORTS FEEDGAS

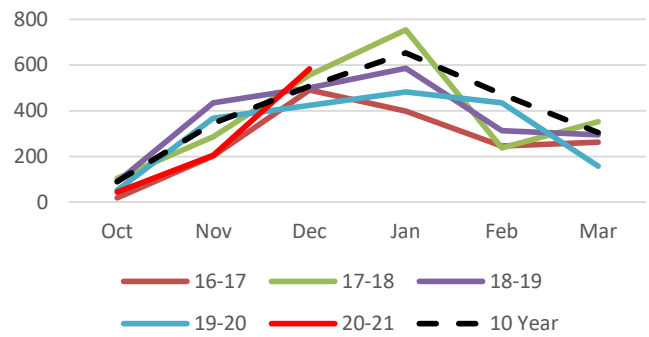


## Bentek Production

### TOTAL U.S. DRY GAS PRODUCTION



### Heating Degree Days - Atlanta



### Baker Hughes Rig Count

