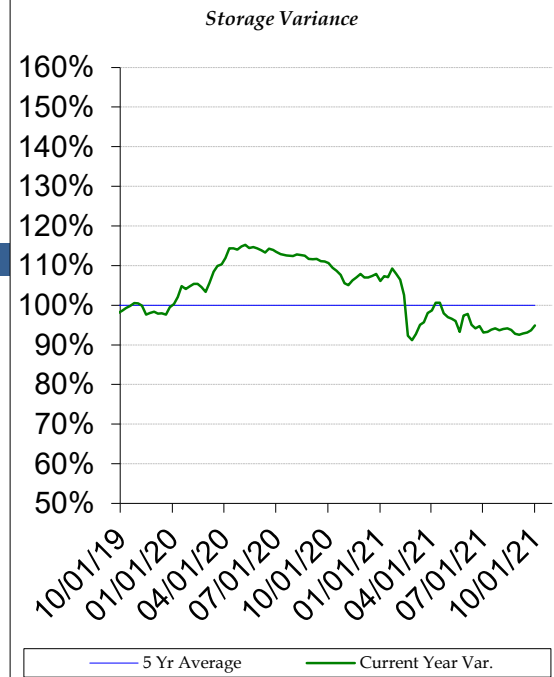


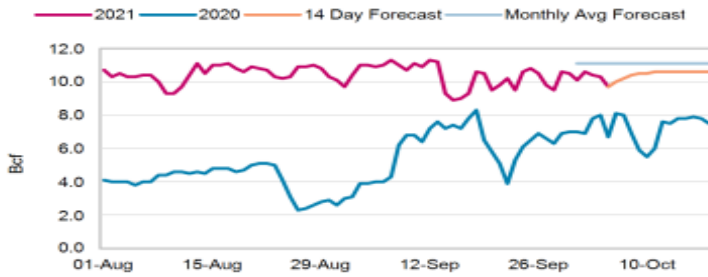
Commodity Fundamentals Update

| Region | 1-Oct | 24-Sep | Change | Last year | 5-yr avg |
|---------------|-------|--------|--------|-----------|----------|
| East | 810 | 779 | 31 | 890 | 855 |
| Midwest | 971 | 934 | 37 | 1058 | 990 |
| Mountain | 206 | 201 | 5 | 235 | 215 |
| Pacific | 248 | 243 | 5 | 318 | 301 |
| South Central | 1054 | 1013 | 41 | 1,319 | 1,104 |
| Total U.S. | 3,289 | 3,170 | 119 | 3,820 | 3,465 |



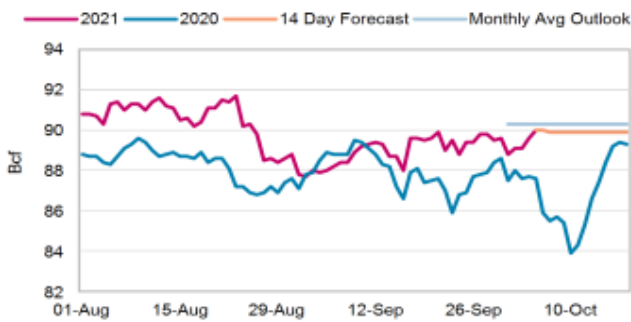
Bentek LNG Data

US LNG EXPORTS FEEDGAS

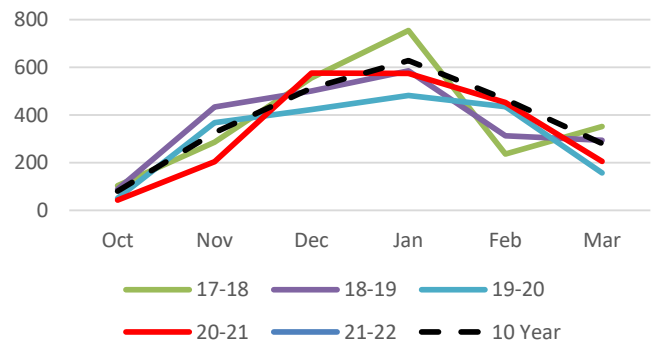


Bentek Production

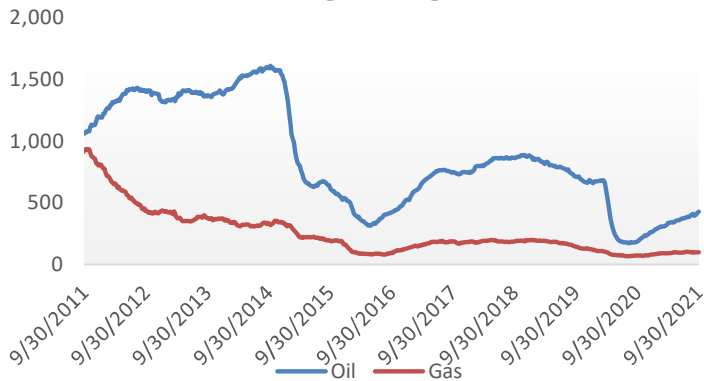
TOTAL U.S. DRY GAS PRODUCTION



Heating Degree Days - Atlanta



Baker Hughes Rig Count



6-10 Day Temperature Outlook

