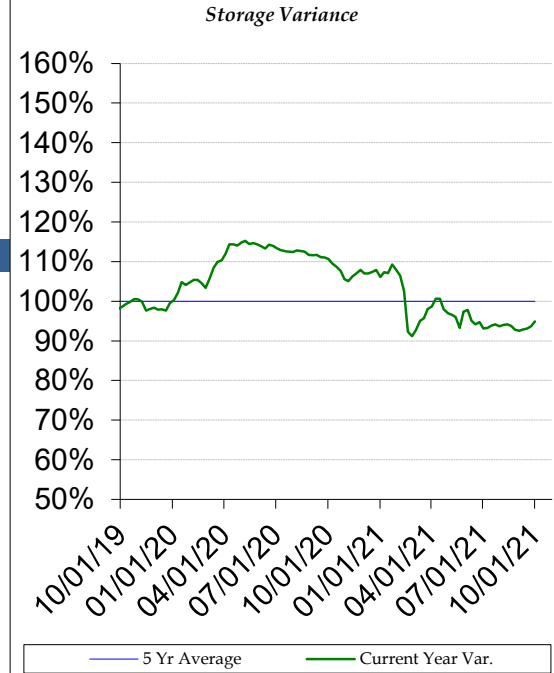


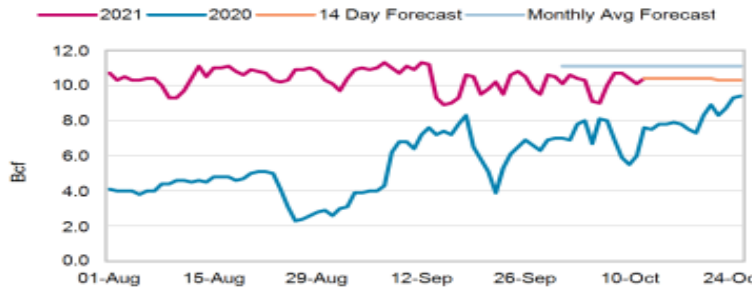
# Commodity Fundamentals Update

Region	1-Oct	24-Sep	Change	Last year	5-yr avg
East	810	779	31	890	855
Midwest	971	934	37	1058	990
Mountain	206	201	5	235	215
Pacific	248	243	5	318	301
South Central	1054	1013	41	1,319	1,104
Total U.S.	3,289	3,170	119	3,820	3,465



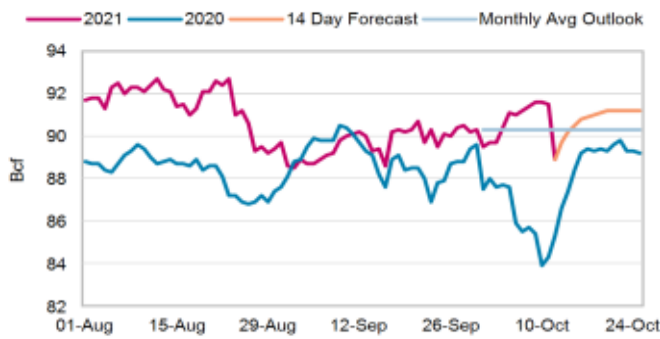
## Bentek LNG Data

### US LNG EXPORTS FEEDGAS

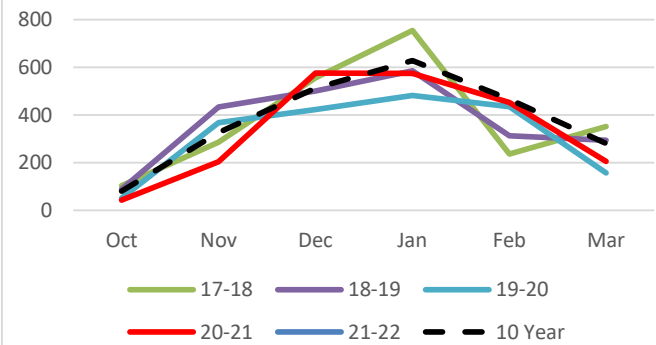


## Bentek Production

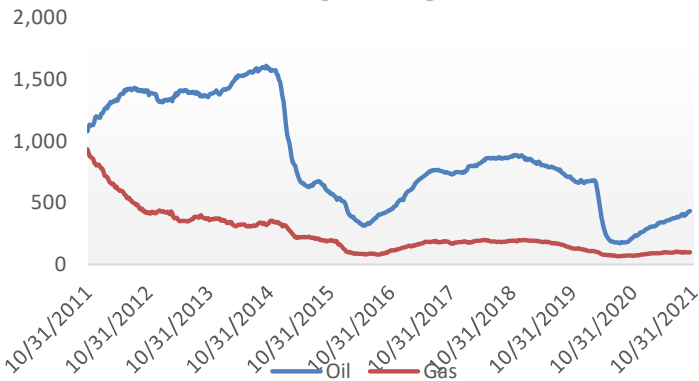
### TOTAL U.S. DRY GAS PRODUCTION



### Heating Degree Days - Atlanta



### Baker Hughes Rig Count



### 6-10 Day Temperature Outlook

