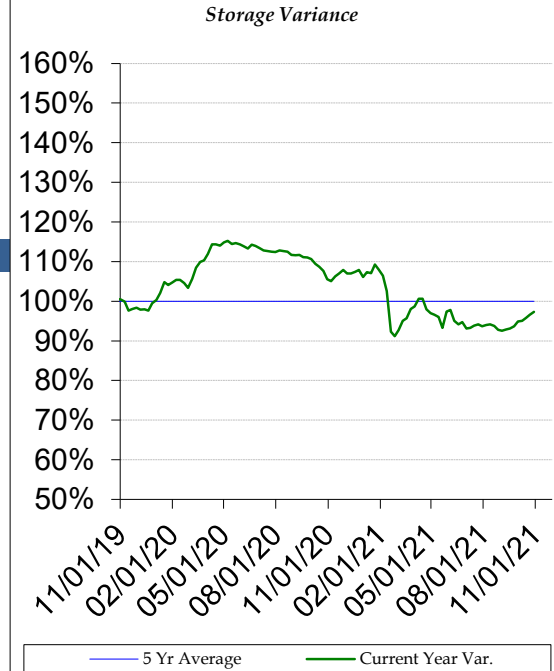


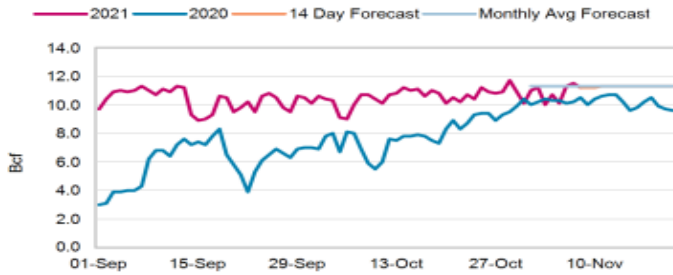
# Commodity Fundamentals Update

Region	29-Oct	22-Oct	Change	Last year	5-yr avg
East	899	885	14	946	913
Midwest	1,071	1,052	19	1119	1086
Mountain	213	212	1	241	221
Pacific	256	255	1	320	304
South Central	1172	1144	28	1,298	1,188
Total U.S.	3,611	3,548	63	3,924	3,712



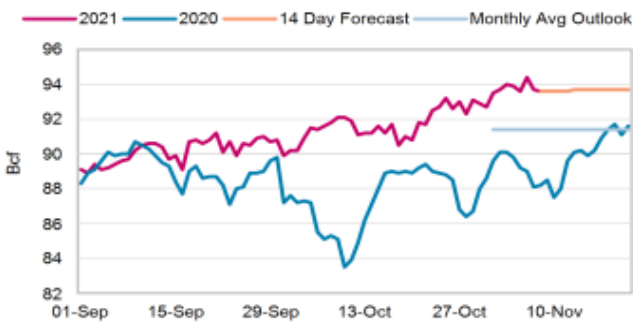
## Bentek LNG Data

### US LNG EXPORTS FEEDGAS

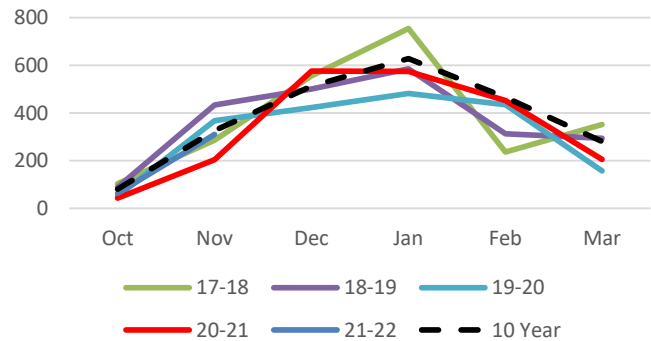


## Bentek Production

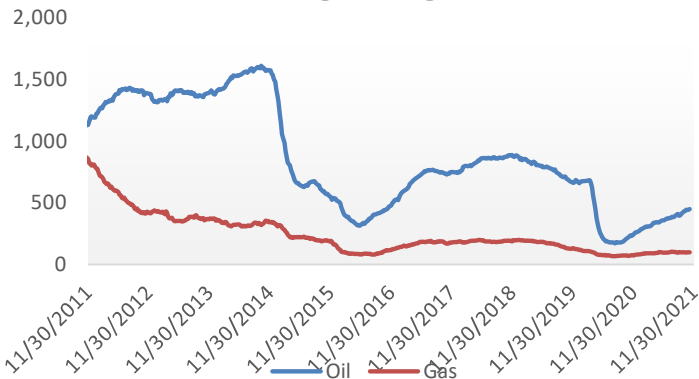
### TOTAL U.S. DRY GAS PRODUCTION



### Heating Degree Days - Atlanta



### Baker Hughes Rig Count



### 6-10 Day Temperature Outlook

